



MATERION

eStainless[®]

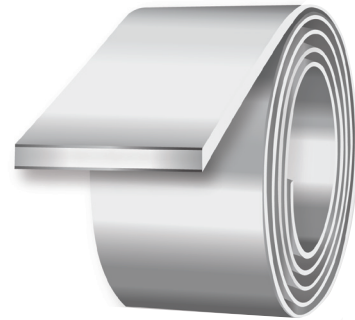
Lighter, Cooler, Thinner.



MATERION TECHNICAL MATERIALS
5 Wellington Road Lincoln, RI 02865
401.333.1700
www.materion.com/technicalmaterials

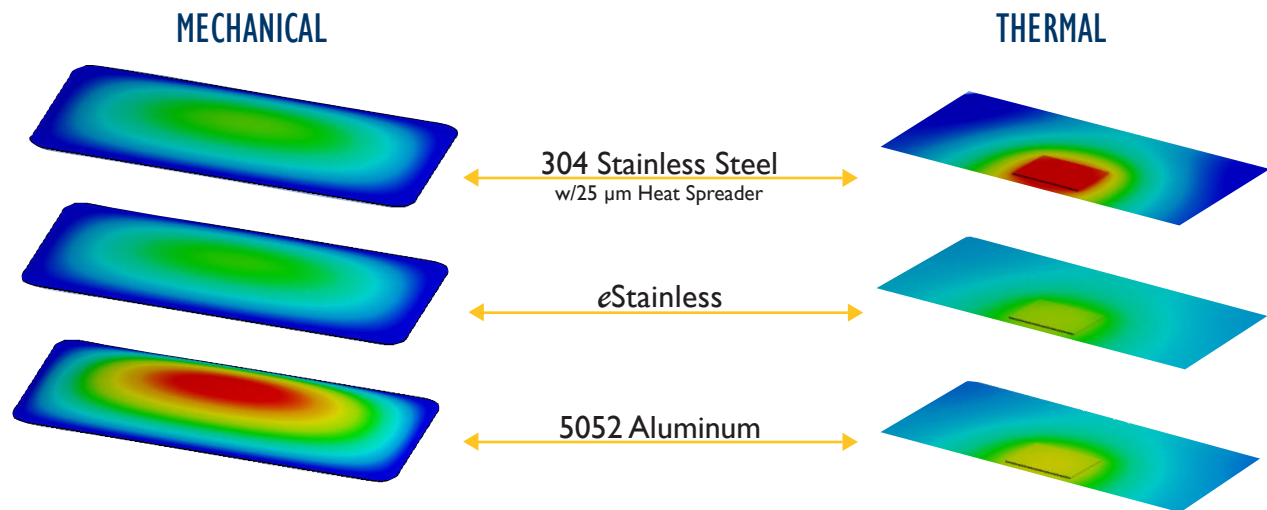
Features

- 10x more thermally conductive than Stainless Steel
- 46% lighter than Stainless Steel
- 2.5x stiffer than Aluminum
- Fully formable



Benefits

- Eliminate secondary graphite film heat spreaders
- Reduce Aluminum component thickness by 25%
- Reduce weight of Steel structures



Properties

eStainless vs. Common Structural Materials

	Flexural Modulus GPa	Density g/cm ³	Thermal Conductivity W/m-K
eStainless	153	4.3	160
Aluminum 6061 T6	69	2.7	167
Titanium	116	4.5	17
Stainless Steel	193	8.0	16